



eni Global Procurement System - Technical requirements



Technical requirements

Before accessing the GPS web site you need to check that your Internet connection is suitable. We recommend that your working station satisfies the technical requirements listed below.

Hardware requirements

- CPU: Pentium or higher.

Internet connection requirements

- Internet Service Provider for accessing Eni e-Procurement Service via browser. We advise you to have a high speed connection (ADSL) ≥ 1 Mbit

System Limitations

- File size limit: 100 MByte for each document
- System Time Out: 15 minutes
- Upload system Time Out: 2 minutes

Browser requirements

In order to access GPS you need:

- **Microsoft Internet Explorer from version 6.x to 9.x**
or
- **Mozilla Firefox from version 3.5 to 6.0**
or
- **Microsoft Edge Chromium 84 (or higher) in IE compatibility mode (IE5 document mode)**

Please refer to your System Administrator in order to configure your browser in such compatibility mode. Compatibility mode must be set for the following URLs:

- gpsvend-srm.eni.it
- gpsvend.eni.it
- gpsvend-cfold.eni.it

You can also manage via policy IE5 document mode following the directions provided from Microsoft:

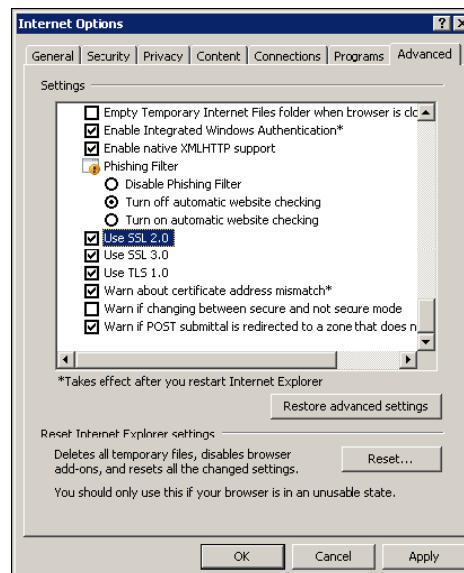
- What is Internet Explorer mode? | Microsoft Docs at <https://learn.microsoft.com/en-us/deployedge/edge-ie-mode>
- Enterprise site configuration strategy | Microsoft Docs at <https://learn.microsoft.com/en-us/deployedge/edge-ie-mode-sitelist>



- Configure IE mode Policies | Microsoft Docs at <https://learn.microsoft.com/en-us/deployedge/edge-ie-mode-policies>
- Enterprise Site List Manager in Microsoft Edge | Microsoft Docs at <https://learn.microsoft.com/en-us/deployedge/edge-ie-mode-site-list-manager>
- Deployment guides for Microsoft 365 - Configure IE mode for Microsoft Edge at <https://setup.microsoft.com/edge/configure-internet-explorer-mode-setup-guide>

You can check your Internet Explorer version by selecting “?”/“Information on Internet Explorer”.

- **SSL** (Secure Socket Layer, protocol for secure transaction) suitability is required. You can check whether you satisfy this requirement by selecting “Tools” -> “Options” -> “Advanced” from the Internet Explorer menu. The options “Use SSL 2.0” and “Use SSL 3.0” should be flagged.



- Cookies enabling is required: you can find instructions on this topic in the “User support” -> “System requirements” -> “Enabling cookies” section on the Eni e-Procurement portal
- Saving encrypted pages to disk must be allowed.
- Resolution: the optimal resolution for the web site is at least 1024x768 pixel.

Software requirements

- An active **e-mail address** is required so that you can receive e-mail notifications when a document is delivered.
- **Acrobat Reader** (at least 8.0) is needed for opening .pdf files containing document notifications that might be received by mail. Acrobat Reader is available free of charge at the following address: <http://www.adobe.it/products/acrobat/readstep.html>
- **Microsoft Office** is recommended. Free copies of the Microsoft Office viewers can be downloaded from www.microsoft.com
- In order to use all the Service functionalities you need to install the **JRE Java Runtime Environment** applet:



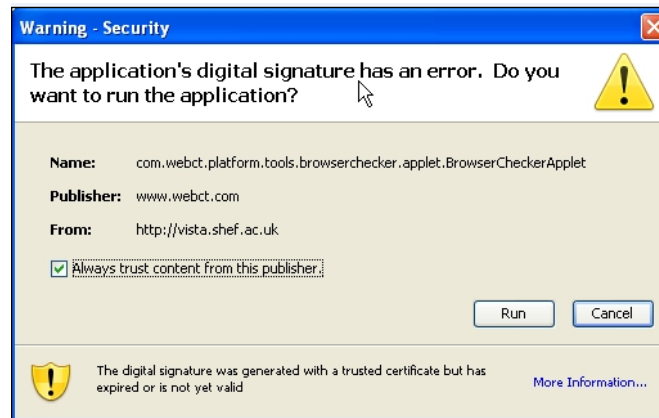
- Minimum release: 1.5.XX
- The file can be downloaded on the SUN web site at the following address:
www.java.com/it



APPENDIX - Setting up Java

JAVA CONFIGURATION

The following pop-up could appear during browsing:

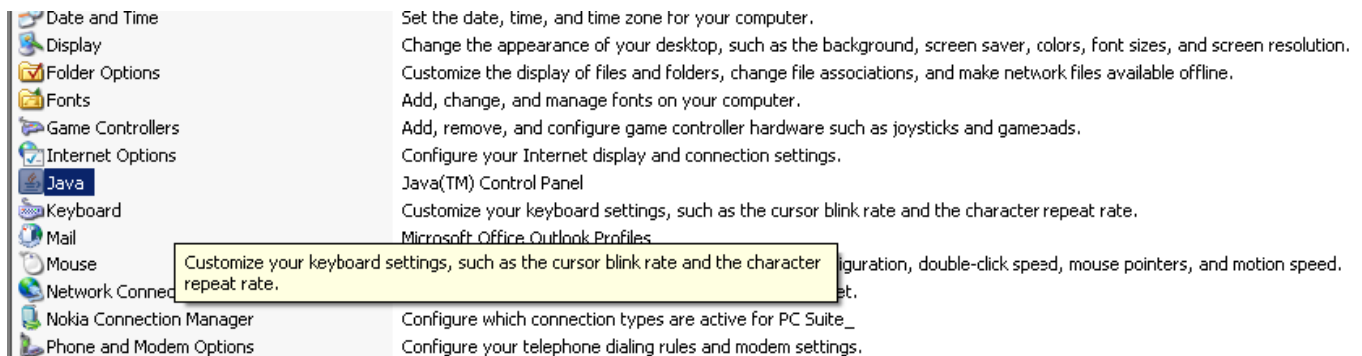


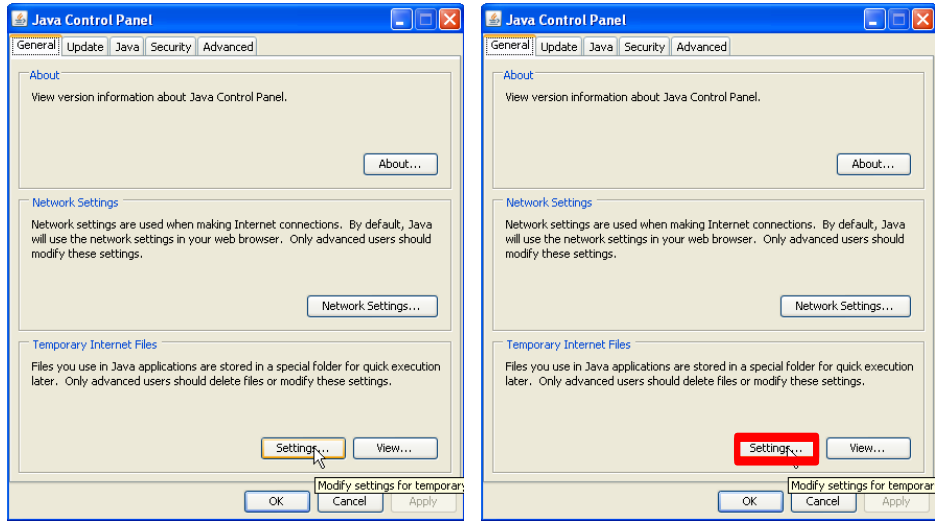
In order to allow the proper functioning of the application the user will tick "*Always trust content from the publisher*" and select "**Run**".

If you select "**Cancel**" follow the steps below.

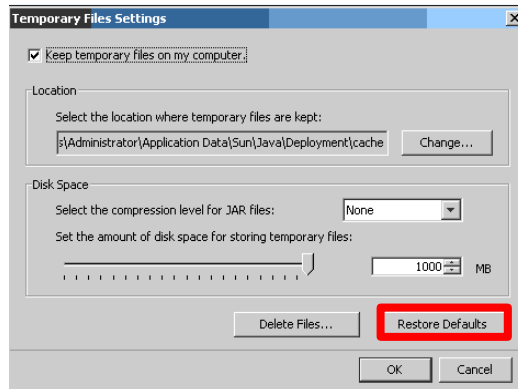
Open java from the Windows Control Panel:

select "**Settings**" from the "**Temporary Internet files**"(view procedure listed below):





Select "**Restore Default**" (as illustrated below):



Repeat the login to SRM and replay the steps required in order to insert attachments. You will be prompted again to accept the java applet to SAP. Afterwards select "**Run**."

